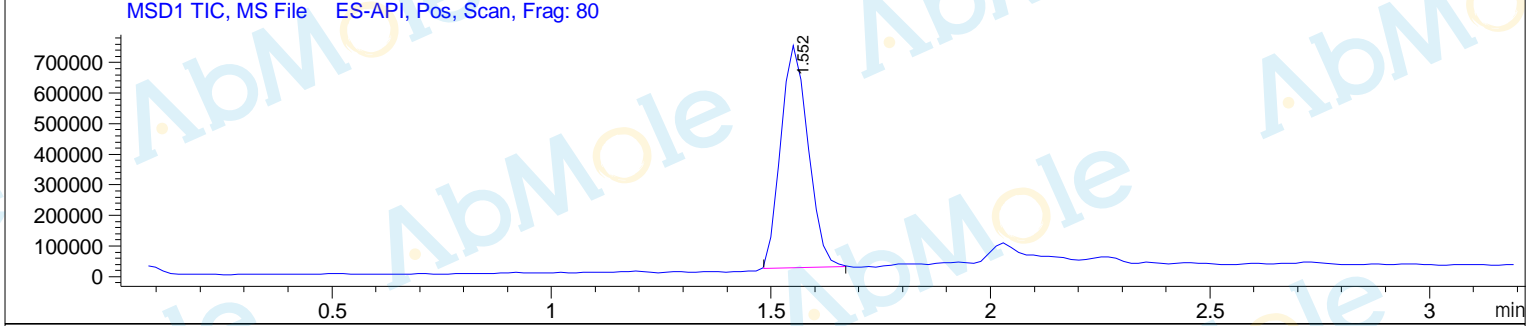
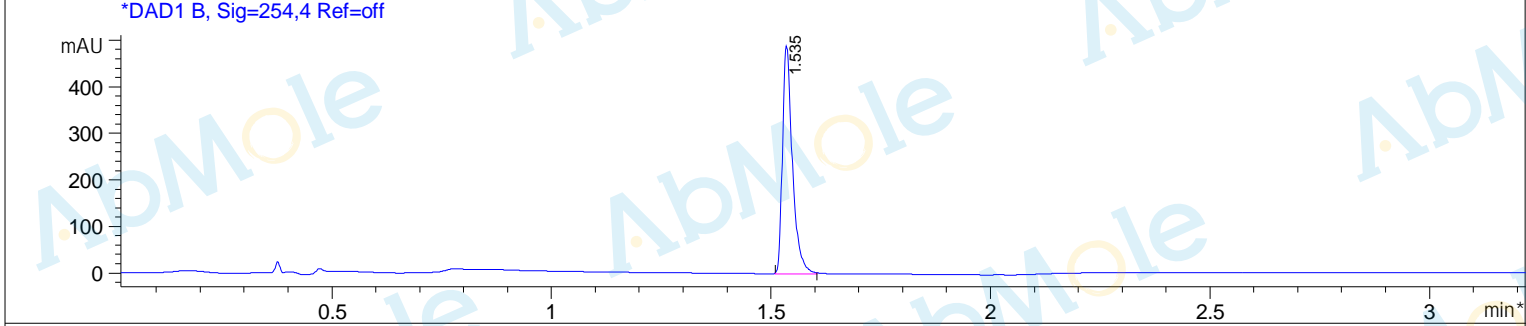
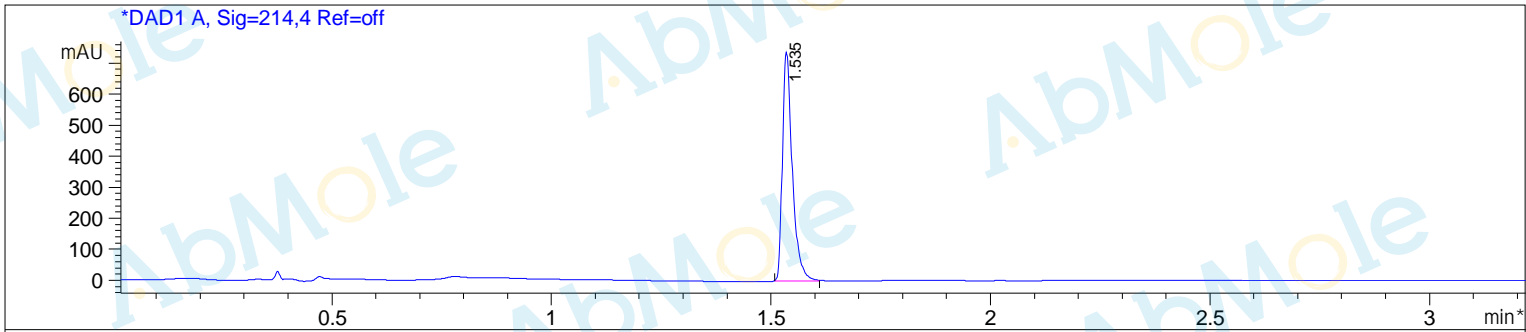


**Sample Name** : M9900-Selpelrcatinib (LOXO-292)-03  
**Acq. Operator** : 11  
**Spec. Reported** : MS Integration  
**Acq. Method** : D:\METHODS\1-POS-3MIN.M  
**Analysis Method** : D:\METHODS\1-POS-3MIN.M  
**Sample Info** : Easy-Access Method: '1-POS-3MIN.M'  
**Method Info** : Column:Xbridge C18(2) (4.6x 50 mm, 3.5um)  
 Mobile phase: H2O(10 mmol NH4HCO3 ) (A) / ACN(B)  
 Elution program: Gradient from 5 to 95% of B in1.5min at 1.8ml/min  
 Temperature: 50 °C  
 Detection: UV (214 , 4 nm) and MS (ESI, Pos mode ,103 to 800 amu)



Integration Results for DAD1 A, Sig=214,4 Ref=off

RetTim	Width	Area	Height	Area%
1.54	0.02	1157.54	736.72	100.00

Integration Results for DAD1 B, Sig=254,4 Ref=off

RetTim	Width	Area	Height	Area%
1.54	0.02	767.97	488.44	100.00

Ret. Time: 1.55

&lt;&lt;&lt;&lt; POSITIVE SPECTRA &gt;&gt;&gt;&gt;

\*ES-API Positive

